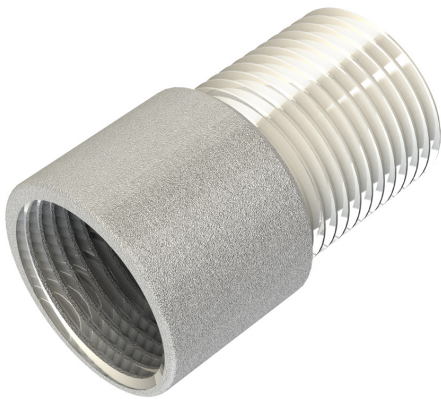


**PRODUCT CODE: FA4G**  
CONDUIT ADAPTOR



**DESCRIPTION**

1"(Male) - 25mm (Female) Conduit Adaptor

**FINISH**

BZP

**MATERIAL**

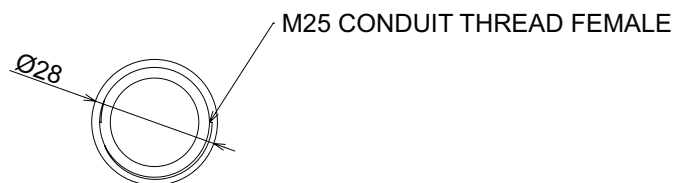
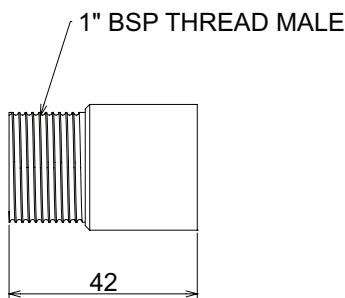
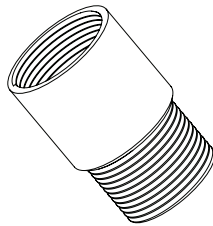
Steel


**PACKAGING**

Packed in qty 10

**ADDITIONAL NOTES**

Conforms to BS EN61386-1  
Compliant to LU Standard 1-085 (for use on surface & sub-surface locations)



 Values are nominal and with a general tolerance  $\pm 5\%$  unless otherwise specified